

TME

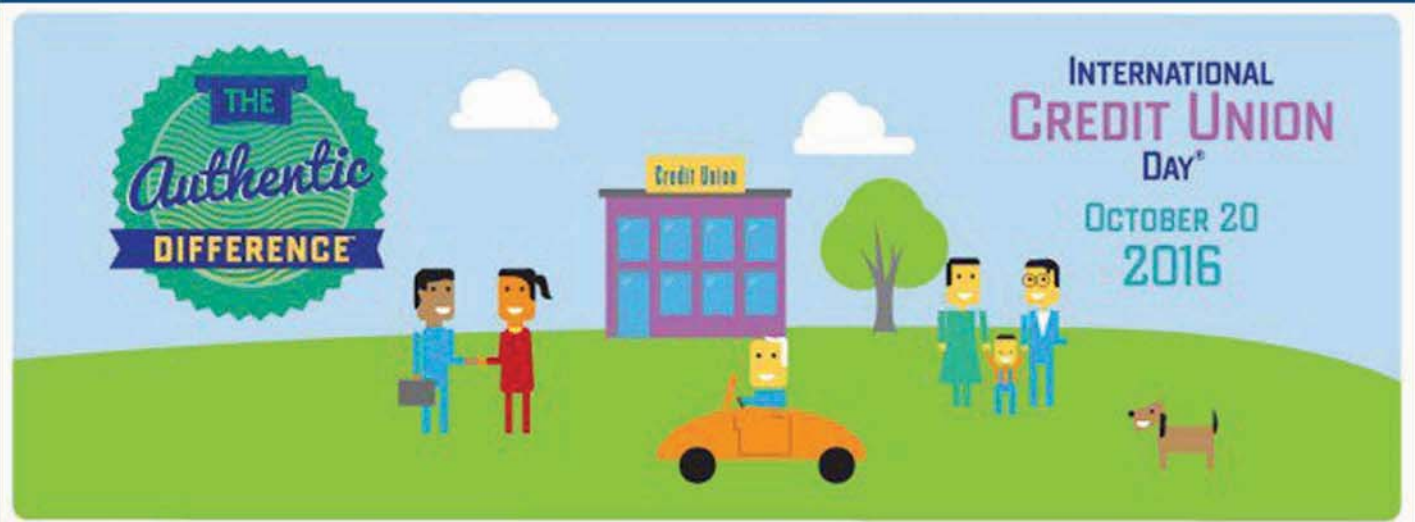
THE INSIDE NEWS

Fall 2016

Volume 29

Issue 4

October 2016



International Credit Union Day - October 20, 2016

Service to members. Democratic control. Social responsibility. These are more than just words; these are the core principals that separate credit unions from other financial institutions and have allowed the movement to thrive for over a century. This year, we have dedicated International Credit Union Day® to communicating the unique qualities that make credit unions special.

On October 20, 2016, join more than 217 million credit union members worldwide in this celebration of the history and achievements of our movement.

Christmas Cash Loans are BACK

Borrow up to

\$2,000

Rates starting at

5.5% APR*



AUTO LOANS

WE HAVE RATES AS LOW AS
1.75% APR*

Thinking about buying a new Auto? If you want an affordable rate, convenient terms, and incredible service, TME Federal Credit Union is the right place to be.



Stop by or give us a call and check out the great deals your credit union has to offer.



All loans subject to credit approval. Christmas Cash Loan special good through January 9, 2017

*Annual Percentage Rate



2016 CHRISTMAS CLUB CHECKS IMPORTANT REMINDER

On Monday, October 3rd the funds in your Christmas Club Account were automatically transferred directly into your Savings Account.



REMINDERS



New Christmas Club Accounts start on October 3, 2016 and end on September 30, 2017.

When mailing deposits or loan payments, please use the following mailing address:
TME Federal Credit Union
3016 West Street
Weirton, WV 26062



CALL FOR NOMINATIONS

There will be an election held for two (2) seats on the Board of Directors for a three (3) year term.

Any member who is interested in running for election must be at least 18 years old and file a petition with the Secretary of the Tin Mill Credit union no later than 5:00 pm on Friday, January 20, 2017.

Anyone who has questions relating to the election procedure should contact Harry E. DeVilling, Secretary/Treasurer at 304-748-5811

ARE YOUR RECORDS UP TO DATE?

Whether you have an individual or joint account(s), it is important to keep all your credit union information accurate. This also includes your address. If you have moved recently, please send us your new address, so that you can be sure to receive all account information in a timely manner. The credit union will be glad to review with you the accuracy of all your credit union information.

For your security, a change of address request must be made in writing. You can mail or fax your signed and dated request. Our address, fax and phone number is:

Tin Mill Employees FCU
3016 West Street
Weirton, WV, 26062
Phone Number: 304-748-5811
Fax Number: 304-748-5495

OUR OFFICES WILL BE CLOSED FOR THE FOLLOWING HOLIDAYS:

Columbus Day
Monday, October 10th



Veterans Day
Friday, November 11th



Thanksgiving Day
Thursday, November 24th



Christmas
Monday, December 26th



New Years Day
Monday, January 2nd, 2017

WE'RE HERE TO SERVE YOU!

TME Federal Credit Union

3016 West Street Weirton, WV 26062
304-748-5811 | www.tme-fcu.org



70653A0916